



All of our staff are aware of the effects of poverty and how it pertains to the context of our school, community and children.

Getting Dressed for School



Universal:

School uniform is a white/purple polo shirt/shirt and purple school jumper and un-embroidered items are acceptable. Our ELC setting provides all children with a school tie. Any shorts and T shirt are acceptable for PE with the exception of football strips. Pupils are encouraged to wear black school shoes or trainers to avoid branding stigma.

Targeted:

We currently have a school uniform bank.

Travelling to School



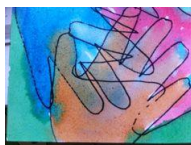
Universal:

Our school serves the catchment of Armadale and almost all children live within walking distance to school. All pupils in P7 can complete Bikability training and bikes and helmets are provided for those if needed. After school clubs are run in school where there is no need to travel any distance.

Targeted:

SLT can support those requiring assistance to complete transport applications.

Friendships at school



Universal

Uniform is promoted to negate any peer pressure for branded and fashion clothing. While there is a device policy in school all pupils have access to digital technology in school.

Targeted

We provide Nurture support for social skills development and a buddy system for P1 children and new pupils.

Learning at school



- Universal

Stationary is provided for all classes to access at all times. There are options for resources to be borrowed to support learning i.e. devices, dictionaries, rulers, calculators.

- Targeted

Reviews are held regularly to provide bespoke learning targets for those children who need support with their learning. This is continually monitored.

School trips



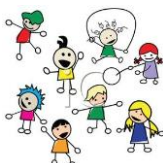
- Universal

We plan school trips in advance to ensure parents/carers are notified in a timely manner. Class excursions are limited to a minimum of one and maximum of two per year. We take into account reasonable charges per children when booking trips and we consider the impact of families with more than one sibling. We try to source locations that provide free transport including public transport, to reduce the cost of trips per person. All pupils have the opportunity to attend residential experiences throughout their time at Primary School. These can be paid up through a payment card and we actively working to set up a Credit Union.

- Targeted

Our SLT are able to support families and sign post them for financial help if and when required.

Fun events



- Universal and targeted

Fun events in the school day are supported by the Parent Council and through school fund. Fundraiser dress down days have been reduced to four in the year and all other dress down days will only require, where possible, a donation for the food bank. We always ask for donations rather than a contribution.



Eating at school

- Universal and Targeted

We have a continual link for FSM applications in our on line newsletter. Cashless catering means that there is less stigma attached to pupils eligible for free school meals.

The school operates a free breakfast club for all pupils. Pupils who do not have a mid-morning snack will be offered a piece of fruit.



Attitudes towards poverty

- Universal

Staff have a good awareness and knowledge and understanding of the children and families in our school. We use a Participatory Budgeting Model to support this. Through the Curriculum we provide opportunities to enhance children's understanding and attitudes towards poverty.

- Targeted:

Our SLT have an open door policy and speak with individual families in regards to supporting and sign posting to help available.

School clubs



- Universal

All in school led/organised after school clubs are free of charge and run voluntarily by staff. We can offer paid clubs such as Sports Scotland clubs or Gardening Club where a cost is required for materials. We fully consult with parents before organising a club that costs.

- Targeted

Our SLT sign post and encourage families to attend in school clubs and activities.



Home learning

- Universal

If this is needed time is allocated to complete in school. We engage and seek views around homework with the Parent Council and the wider parent body through engagement events.

- Targeted

SLT available for support sessions to offer help/advice when required.

